

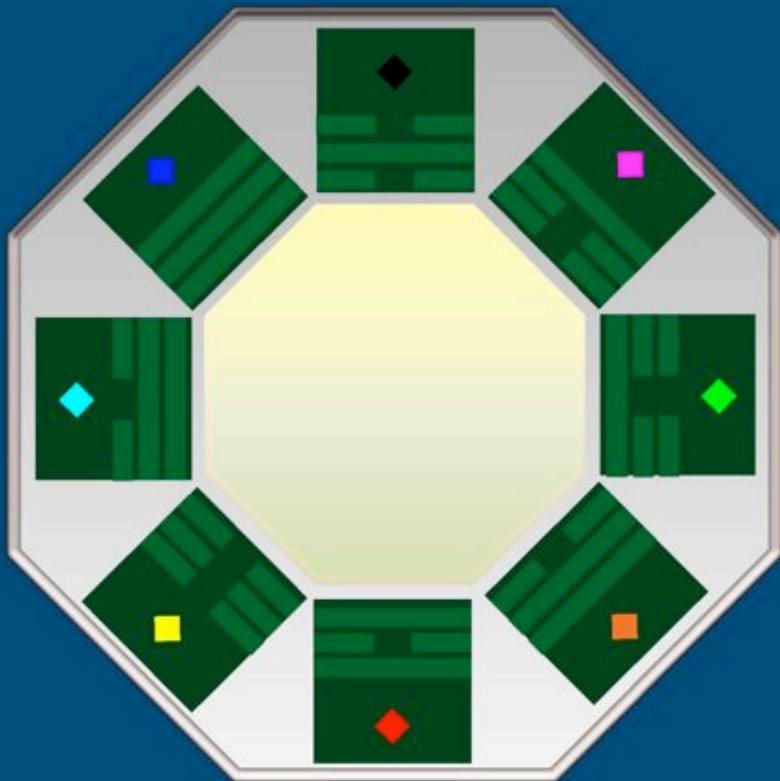
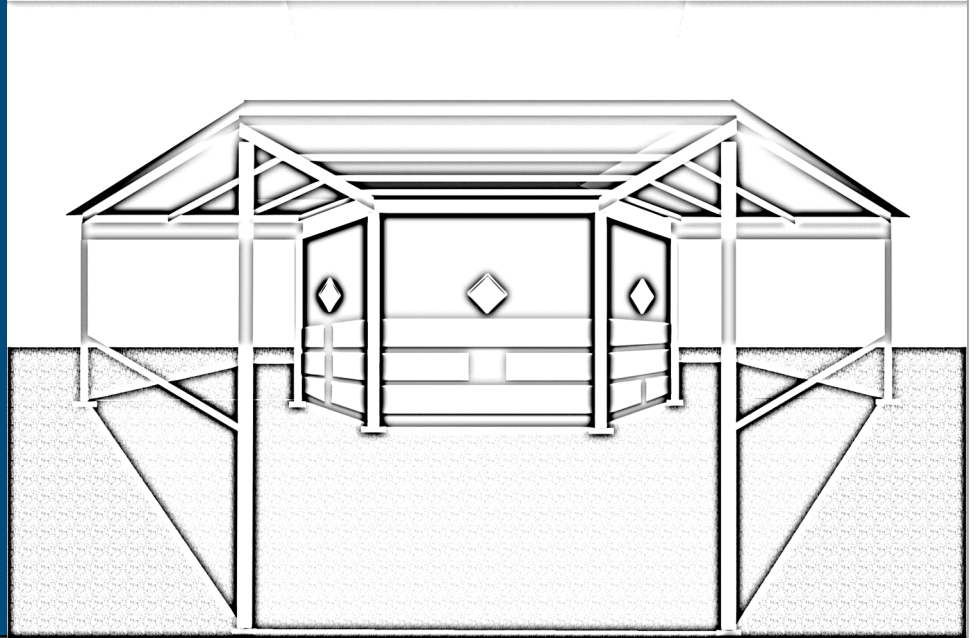
Work in Progress: Existential

Socrates Sculpture Park: EAF15

Proposal: *Dealing with Dystopian Development (If the D is for Diamonds then Run the Jewels)*

Artist: George Turner

For additional information:
geoleoturner@gmail.com



For your consideration, this is a proposal for a sculpture that harmonizes the desire for accessible creative space with the reality of the New York City real estate market by combining primary tenets of the *I Ching* with basic materials of urban development.

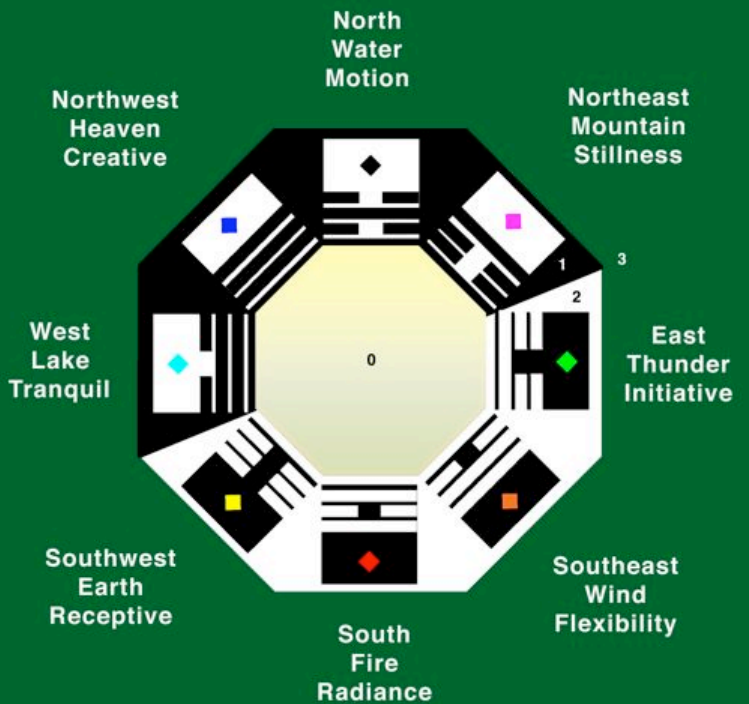
The form of the structure is inspired by the primary visual referent of urban development familiar to all New Yorkers – the ubiquitous construction wall and sidewalk shed – mindfully emulating an ancient system of balanced progression.

The *I Ching* represents a millennia-old attempt to organize human development by observing natural boundaries that reveal the essential unity of the diverse and perpetually changing situations of being. The key elements of this creative system used here are:

(0) Wu Chi – the concept of total awareness wherein all energy begins and ends

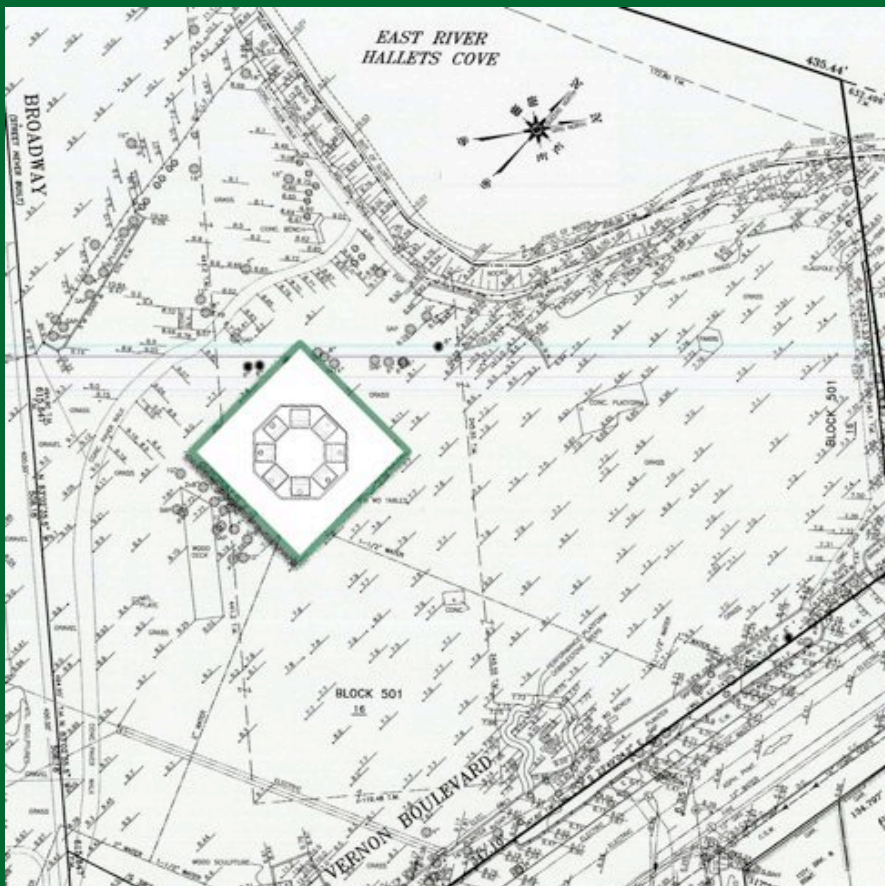
(1+2) Tai Chi – the complement of Wu Chi defined by the fundamental binary interrelationship of dark (yin) and light (yang) energy

(3) Baqua – the original eight symbols that encircle Tai Chi and present reality as an interconnected series of concepts



The Wu Chi is represented as an empty circle, the Tai Chi is represented with either a broken line (yin) or a solid line (yang), and the Baqua present alternating combinations of these lines into groups of three, known as trigrams. These eight symbols are placed in an analogous spatial arrangement known as the Later Heaven sequence wherein the nature of each trigram flows into the next.

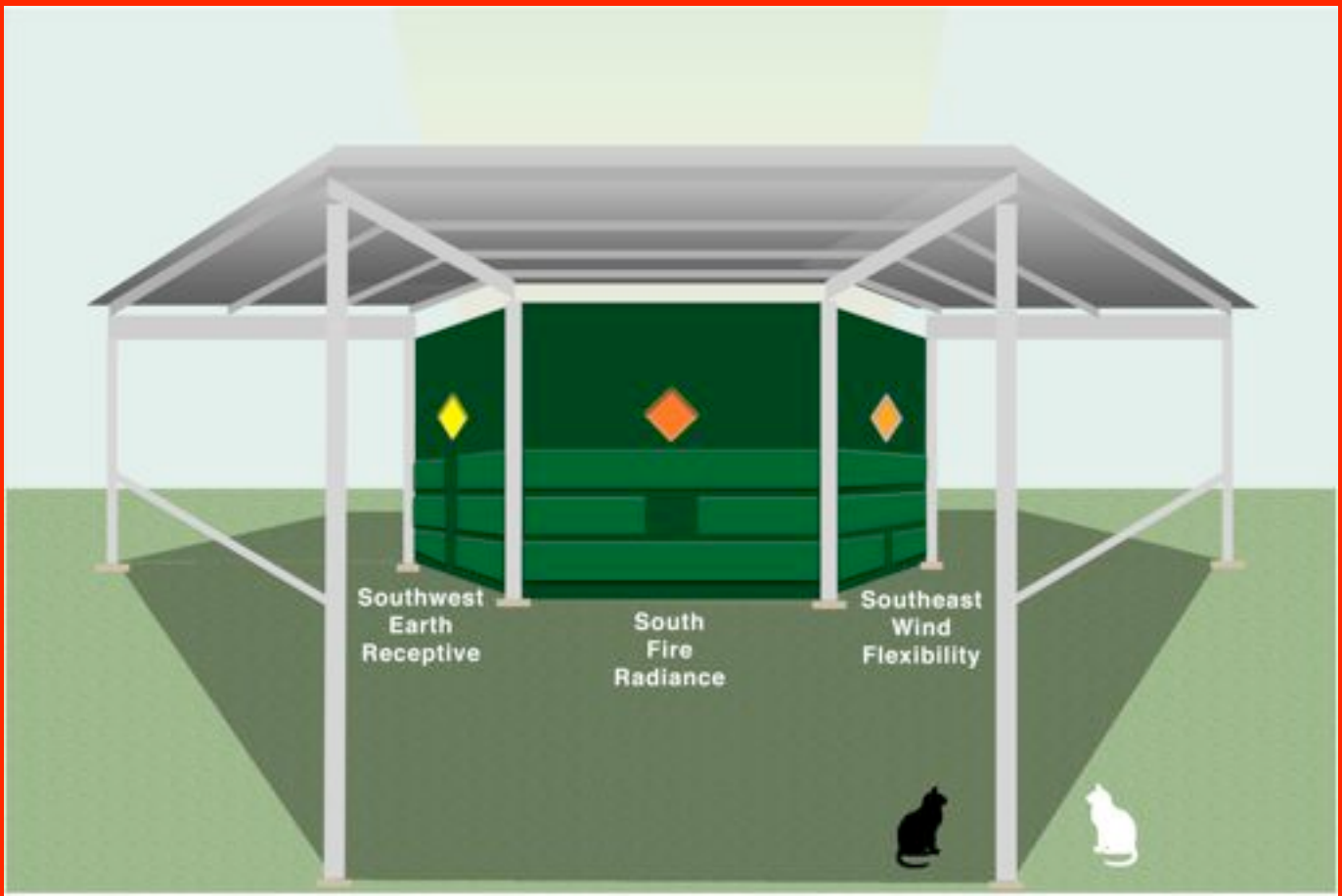
I am offering to produce a harmonic composition of these associations into a structure that functions as a welcome place of respite, contemplation, and expression.



Situated on a flat grassy area by the river, eight upright 8'h x 8'w framed walls of construction-grade plywood are securely arranged into an octagon that is encircled by an 8'h x 8'w steel sidewalk shed.

The shed has sixteen exterior uprights that are horizontally braced at 36" high on four alternating sides and open at four sides corresponding to north, south, east, or west.

Additional bracing to the sixteen interior uprights follow typical shed construction. The roof of the shed is clad in corrugated steel though without the additional plywood parapet associated with typical structures.



The exterior of the eight panels is painted in shades and tints of Hunter green and each panel has a raised plywood trigram that corresponds to its cardinal direction.

The viewer remains outside of the octagon but is encouraged to circumnavigate and visually access the interior through 12" x 12" diamond-shaped portals of Plexiglas, 60" high at the center of each panel, in different colors according to its principal orientation.

The interior face of the panels is gilded entirely in gold leaf and the ground within the octagon is cultivated and sown with wildflower seed.

